

DVP-ES3 主機系列

EN	Instruction Sheet
TR	Bilgi Dökümanı
TW	安裝說明
CN	安装说明



5014119300
2019-10-04



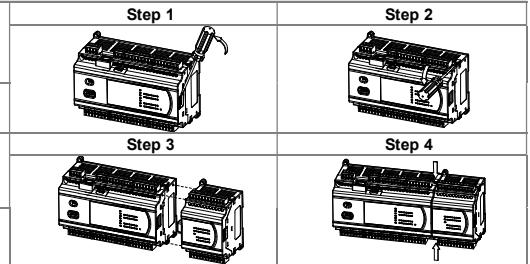
www.deltaww.com



EN	✗ This is an OPEN TYPE module and therefore should be installed in an enclosure free of airborne dust, humidity, electric shock and vibration. The enclosure should prevent non-maintenance staff from operating the device (e.g. key or specific tools are required for operating the enclosure) in case danger and damage on the device may occur.
FR	✗ Ceci est un module ouvert et il doit donc être installé dans un coffret à l'abri des poussières, des vibrations et ne pas être exposé aux chocs électriques. Le boîtier ou l'armoire doit éviter toute action d'un personnel autre que celui affecté à la maintenance de l'appareil (par exemple, clefs, outils spécifiques pour l'ouverture du coffret), ceci afin d'éviter tout accident corporel ou endommagement du produit).
TR	✗ Bu ürün AÇIK TİP bir modül olup toz, rutubet, elektrik şoku ve titreşimden uzak kapalı yerlerde muhafaza edilmelidir. Yanlış kullanım sonucu ürünün zarar görmesini önlemek için yetkili olmayan kişiler tarafından ürüne müdahale edilmesini önleyecek koruyucu önlemler alınmalıdır. (Ürünün bulunduğu panoya kilit konulması gibi).
TW	✗ 本機為開放型 (OPEN TYPE) 機種，因此使用者使用本機時，必須將之安裝於具防塵、防潮及免於電擊衝擊意外之外殼配線箱內。另必須具備保護措施 (如：特殊之工具或鑰匙才可打開) 防止非維護人員操作或意外衝擊本體，造成危險及損壞。
CN	✗ 本机为开放型 (OPEN TYPE) 機種，因此使用者使用本机时，必须将其安装于具防尘、防潮及免于电击/冲击意外的外壳配线箱内。另必须具备保护措施 (如：特殊的工具或钥匙才可打开) 防止非维护人员操作或意外冲击本体，造成危险及损坏。

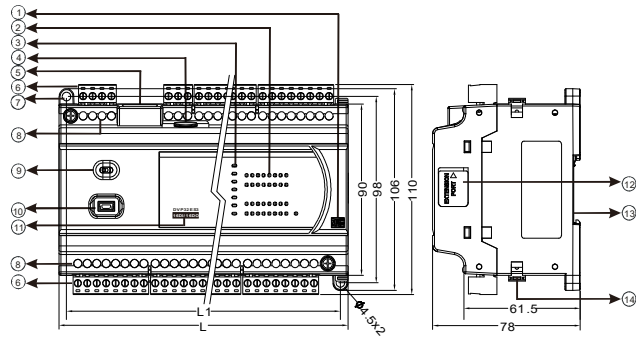
EN	Please refer to the DVP-ES3 Operation Manual for details.	TR	Ayrıntılar için DVP-ES3 Uygulama Manueline bakınız.
TW	詳細資料請參考 DVP-ES3 操作手冊	CN	详细资料请参考 DVP-ES3 操作手冊

EN	Assembly	TR	Montaj	TW	安裝	CN	组装
EN	Install the device by following steps 1~4 (on the right).	TR	Aygıtı, sağda anlatılan 1'den 4'e kadar olan adımları takip ederek montajını yapın.	TW	依照右方所示的步驟 1~4 進行安裝。	CN	依照右方所示的步驟 1~4 进行安裝。



EN	Product Profile & Dimensions (mm)	TR	Ürün Profili & Ölçüler(mm)	TW	外觀與尺寸	CN	外观与尺寸
----	-----------------------------------	----	----------------------------	----	-------	----	-------

EN	Dimensions(mm) & Product Profile
TR	Ölçüler(mm) & Ürün Görünüşü
TW	尺寸 (mm) 及產品外觀
CN	尺寸 (mm) 及产品外观



1	Output type	Çıkış tipleri	輸出類型	输出类型
2	I/O indicator	I/O indikatör	輸入/輸出指示燈	输入/输出指示灯
3	POWER, RUN, ERROR indicator	POWER, RUN, ERROR indikatör	電源、運行、錯誤、通訊指示燈	电源、运行、错误、通讯指示灯
4	SD card slot	SD kart yuvası	SD 卡插槽	SD 卡插槽
5	RJ45 communication port	RJ45 haberleşme port	RJ45 通訊埠	RJ45 通讯埠
6	Removable terminal block	Sökülebilir terminal bloğu	脫落式端子	脱落式端子
7	Direct mounting holes	Doğrudan montaj delikleri	直接固定孔	直接固定孔
8	Terminal number	Terminal numarası	端子編號	端子編號
9	RUN/STOP switch	RUN/STOP anahtarı	RUN/STOP 開關	RUN/STOP 開關
10	USB communication port	USB haberleşme port	USB 通訊埠	USB 通讯埠
11	Model name	Model adı	機種名稱	機種名稱
12	I/O connector	G / Ç konektörü	I/O 模組連接埠	I/O 模組連接埠
13	DIN rail mounting slot (35mm)	DIN ray montaj slotu (35mm)	DIN 軌槽 (35mm)	DIN 軌槽 (35mm)
14	I/O module clip	I/O modül klipsi	I/O 模組固定扣	I/O 模組固定扣

Model	DVP32ES311T	DVP32ES300R/T	DVP48ES300R/T	DVP64ES300R/T	DVP80ES300R/T
L	165	165	216	267	310
L1	157	157	208	259	302

EN I/O	TR I/O	TW 輸入輸出	CN 輸入輸出
Input No.	X0 ~ X7	X10 ~ X17	X20 ~ #1
Max. frequency	200kHz	20kHz	50Hz
Action level	Off → On	>15VDC	
	On → Off	< 5VDC	
Response time	Off → On	< 1.5µs	< 15µs < 10ms
	On → Off	< 1.5µs	< 15µs < 10ms
Output type	Relay-R	Transistor-T	
Output No.	All	Y0~Y7	Y10 ~ #1
Max. frequency	1Hz	200kHz	1kHz
#1: Please refer to "I/O Terminal" for the max. X/Y No. on each model.			
		<p>Sinking</p>	<p>Sourcing</p>
		<p>I/O Relay</p>	<p>I/O Relay</p>
		<p>I/O(Sink)</p>	

EN I/O Configuration	TR I/O Konfigürasyonu	TW 端子配置	CN 端子配置
Upper row	1 2 3 4 5 6 7 8 9 10 11 12 13 14 15 16 17 18 19 20 21 22 23 24	25 26 27 28 29 30 31 32 33 34 35 36 37 38 39 40 41	
32ES300	L N • • • +24V 24G • S/S X0 X1 X2 X3 X4 X5 X6 X7 X10 X11 X12 X13 X14 X15 X16 X17		
32ES311		24V 0V • S/S X0 X1 X2 X3 X4 X5 X6 X7 X10 X11 X12 X13 X14 X15 X16 X17	
48ES3	L N • • • +24V 24G • S/S0 X0 X1 X2 X3 X4 X5 X6 X7 X10 X11 X12 X13 X14 X15 X16 X17 S/S1 X20 X21 X22 X23 X24 X25 X26 X27		
64ES3	L N • • • +24V 24G • S/S0 X0 X1 X2 X3 X4 X5 X6 X7 X10 X11 X12 X13 X14 X15 X16 X17 S/S1 X20 X21 X22 X23 X24 X25 X26 X27 X30 X31 X32 X33 X34 X35 X36 X37		
80ES3	L N • • • +24V 24G • CAN+ CAN- GND S/S0 X0 X1 X2 X3 X4 X5 X6 X7 X10 X11 X12 X13 X14 X15 X16 X17 S/S1 X20 X21 X22 X23 X24 X25 X26 X27 X30 X31 X32 X33 X34		
Upper row	42 43 44 45 46 47 48 49 50 51 52		
80ES3	X35 X36 X37 X40 X41 X42 X43 X44 X45 X46 X47		
Lower row	1 2 3 4 5 6 7 8 9 10 11 12 13 14 15 16 17 18 19 20 21 22 23 24 25 26 27 28	29 30 31 32 33 34 35 36 37 38	
32ES3-R	D+ D- SG D+ D- CAN+ CAN- GND - C0 Y0 Y1 Y2 Y3 Y4 Y5 Y6 Y7 - C1 Y10 Y11 Y12 Y13 Y14 Y15 Y16 Y17		
32ES3-T	D+ D- SG D+ D- CAN+ CAN- GND UP0 ZP0 Y0 Y1 Y2 Y3 Y4 Y5 Y6 Y7 UP1 ZP1 Y10 Y11 Y12 Y13 Y14 Y15 Y16 Y17		
48ES3-R	D+ D- SG D+ D- CAN+ CAN- GND - C0 Y0 Y1 Y2 Y3 Y4 Y5 Y6 Y7 - C1 Y10 Y11 Y12 Y13 Y14 Y15 Y16 Y17 - C2 Y20 Y21 Y22 Y23 Y24 Y25 Y26 Y27		
48ES3-T	D+ D- SG D+ D- CAN+ CAN- GND UP0 ZP0 Y0 Y1 Y2 Y3 Y4 Y5 Y6 Y7 UP1 ZP1 Y10 Y11 Y12 Y13 Y14 Y15 Y16 Y17 UP2 ZP2 Y20 Y21 Y22 Y23 Y24 Y25 Y26 Y27		
64ES3-R	D+ D- SG D+ D- CAN+ CAN- GND - C0 Y0 Y1 Y2 Y3 Y4 Y5 Y6 Y7 - C1 Y10 Y11 Y12 Y13 Y14 Y15 Y16 Y17 - C2 Y20 Y21 Y22 Y23 Y24 Y25 Y26 Y27		
64ES3-T	D+ D- SG D+ D- CAN+ CAN- GND UP0 ZP0 Y0 Y1 Y2 Y3 Y4 Y5 Y6 Y7 UP1 ZP1 Y10 Y11 Y12 Y13 Y14 Y15 Y16 Y17 UP2 ZP2 Y20 Y21 Y22 Y23 Y24 Y25 Y26 Y27		
80ES3-R	D+ D- SG D+ D- - C0 Y0 Y1 Y2 Y3 Y4 Y5 Y6 Y7 - C1 Y10 Y11 Y12 Y13 Y14 Y15 Y16 Y17 - C2 Y20 Y21 Y22 Y23 Y24 Y25 Y26 Y27 - C3 Y30		
80ES3-T	D+ D- SG D+ D- UP0 ZP0 Y0 Y1 Y2 Y3 Y4 Y5 Y6 Y7 UP1 ZP1 Y10 Y11 Y12 Y13 Y14 Y15 Y16 Y17 UP2 ZP2 Y20 Y21 Y22 Y23 Y24 Y25 Y26 Y27 UP3 ZP3 Y30		
Lower row	39 40 41 42 43 44 45 46 47 48	49 50 51 52 53 54 55	
64ES3-R	- C3 Y30 Y31 Y32 Y33 Y34 Y35 Y36 Y37		
64ES3-T	UP3 ZP3 Y30 Y31 Y32 Y33 Y34 Y35 Y36 Y37		
80ES3-R	Y31 Y32 Y33 Y34 Y35 Y36 Y37 - C4 Y40 Y41 Y42 Y43 Y44 Y45 Y46 Y47		
80ES3-T	Y31 Y32 Y33 Y34 Y35 Y36 Y37 UP4 ZP4 Y40 Y41 Y42 Y43 Y44 Y45 Y46 Y47		

EN Wiring	TR Bağlantı	TW 配線	CN 配线
EN Please use single-core or multi-core cables. The diameters of the cables used should be within the range between 12 AWG and 24 AWG (2 mm). The specifications for the terminals and the wiring are shown in the figure. The temperature of the copper conductor should be 60/75°C.	TR Lütfen tek damarlı veya çok damarlı kablo kullanın. Kullanılan kablo çapı 12 AWG ve 24 AWG (<2 mm) aralığında olmalıdır. Terminal ve bağlantı özellikleri şekilde gösterilmiştir. Bakır iletkenin sıcaklığı 60/75°C 'ye kadar olmalıdır.	TW 輸出 / 入配線端請使用 12-24 AWG (2 mm) 單蕊裸線或多蕊線。端子規格及配線示意圖如右所示。只能使用 60/75°C 的銅導線。	CN 輸出 / 入配線端請使用 12-24 AWG (2 mm) 單蕊裸線或多蕊線。端子規格及配線示意圖如右所示。只能使用 60/75°C 的銅導線。

Part Name	Hazardous Substances						台達電子工業股份有限公司 機電事業群 地址：33068 桃園市桃園區興隆路 18 號 電話：886-3-3626301 傳真：886-3-3716301	Industrial Automation Headquarters Delta Electronics, Inc. Taoyuan Technology Center No.18, Xinglong Rd., Taoyuan District, Taoyuan City, 33068, Taiwan TEL: 886-3-362-6301 / FAX: 886-3-371-6301
	Pb	Hg	Cd	Cr(VI)	PBB	PBDE		
金屬部件 Metal Part	X	O	O	O	O	O	中達電通股份有限公司 地址：上海市浦東新區民復路 238 號 郵編：201209 電話：(021) 5863-5678 傳真：(021) 5863-0003	Delta Greentech (China) Co., Ltd. 238 Min-Xia Road, Pudong District, Shanghai, P.R.C. 201209 TEL: 86-21-5863-5678 / FAX: 86-21-5863-0003
塑料部件 Plastic Part	O	O	O	O	O	O		
電子件 Electronic	X	O	O	O	O	O	上海 電話：(021)6301-2827 武漢 電話：(027)8544-847 濟南 電話：(0531)8690-7277 烏魯木齊 電話：(0991)4678-141 沈陽 電話：(024)2334-16123	南京 電話：(025)8334-6585 廈門 電話：(0592)6313-601 天津 電話：(022)2301-5082 重慶 電話：(023)8806-0306
接點 Contacts	O	O	X	O	O	O		
線纜和線纜附件 Cable & Cabling accessories	X	O	O	O	O	O	南昌 電話：(0791)8625-5010 長沙 電話：(0731)8927-7881 鄭州 電話：(0371)6384-2772 西安 電話：(029)8636-0780 長春 電話：(0431)8892-5060	杭州 電話：(0571)8882-0610 廣州 電話：(020)3879-2175 太原 電話：(0351)4039-475 哈爾濱 電話：(0451)5366-0643
電池 Battery	O	O	O	O	O	O		

Asia Delta Electronics (Shanghai) Co., Ltd. No.182 Minyu Rd., Pudong Shanghai, P.R.C. Post code : 201209 TEL: 86-21-6872-3988 / FAX: 86-21-6872-3996 Customer Service: 400-820-9595 Delta Electronics (Japan), Inc. Tokyo Office Industrial Automation Sales Department 2-1-14 Shiba-daimon, Minato-ku Tokyo, Japan 105-0012 TEL: 81-3-5733-1155 / FAX: 81-3-5733-1255 Delta Electronics (Korea), Inc. Seoul Office 1511, 219, Gasan Digital 1-Ro., Geumcheon-gu, Seoul, 08501 South Korea TEL: 82-2-515-5305 / FAX: 82-2-515-5302 Delta Energy Systems (Singapore) Pte Ltd. 4 Kaki Bukit Avenue 1, #05-04, Singapore 417939 TEL: 65-6747-5155 / FAX: 65-6744-9228 Delta Electronics (India) Pvt. Ltd. Plot No.43, Sector 35, HSIIDC Gurgaon, PIN 122001, Haryana, India TEL: 91-124-4874900 / FAX: 91-124-4874945	Delta Electronics (Thailand) PCL. 909 Soi 9, Moo 4, Bangpoo Industrial Estate (E.P.Z), Pattana 1 Rd., T.Phraksa, A.Muang, Samutprakarn 10280, Thailand TEL: 66-2709-2800 / FAX: 662-709-2827 Delta Energy Systems (Australia) Pty Ltd. Unit 20-21/45 Normanby Rd., Notting Hill Vic 3168, Australia TEL: 61-3-9543-3720 Americas Delta Electronics (Americas) Ltd. Raleigh Office P.O. Box 12173, 5101 Davis Drive, Research Triangle Park, NC 27709, U.S.A. TEL: 1-919-767-3813 / FAX: 1-919-767-3969 Delta Greentech (Brasil) S/A São Paulo Office Rua Itapeva, 26 - 3º Andar - Bela Vista CEP: 01332-000 - São Paulo - SP - Brasil TEL: 55-11-3530-8642 / 55-11-3530-8640 Delta Electronics International Mexico S.A. de C.V. Mexico Office Via Dr. Gustavo Baz No. 2160, Colonia La Loma, 54060 Tlalneapantla Estado de Mexico TEL: 52-55-2628-3015 #3050/3052	EMEA Headquarter: Delta Electronics (Netherlands) B.V. Sales: Sales.IA.EMEA@deltaw.com Marketing: Marketing.IA.EMEA@deltaw.com Technical Support: latechnicalsupport@deltaw.com Customer Support: Customer-Support@deltaw.com Service: Service.IA.emea@deltaw.com TEL: +31(0)40 900 3800 BENELUX: Delta Electronics (Netherlands) B.V. De Witboog 20, 6652 AG Eindhoven, The Netherlands Mail: Sales.IA.Benelux@deltaw.com TEL: +31(0)40 900 3800 DACH: Delta Electronics (Netherlands) B.V. Coesterweg 45, D-59494 Soest, Germany Mail: Sales.IA.DACH@deltaw.com TEL: +49(0)291 987 0 France: Delta Electronics (France) S.A. Zi du bois Chailand 2, 15 rue des Pyrénées, Lisses, 91090 Evry Cedex, France Mail: Sales.IA.FR@deltaw.com TEL: +33(0)1 69 77 82 60 Iberia: Delta Electronics Solutions (Spain) S.L.U Ctra. De Villaverde a Vallecas, 265 1ª Dcha Ed. Homiguerras - Pl. de Vallecas 28031 Madrid TEL: +34(0)91 223 74 20 C/Iluri, 321-329 (Edificio Cinc) 22@Barcelona, 08019 Barcelona Mail: Sales.IA.Iberia@deltaw.com TEL: +34 93 303 00 60	Italy: Delta Electronics (Italy) S.r.l. Ufficio di Milano Via Senigallia 10/2 20161 Milano (MI) Piazza Graziosi 18 00186 Roma Italy Mail: Sales.IA.Italy@deltaw.com TEL: +39 02 64672538 Russia: Delta Energy System LLC Vereyskaya Plaza II, office 112 Vereyskaya str. 17 121357 Moscow Russia Mail: Sales.IA.RU@deltaw.com TEL: +7 495 644 3240 Turkey: Delta Greentech Elektronik San. Ltd. Sti. (Turkey) Serfilah Mah. Hemen Cad. Kule Sok. No:16-A 34775 Ümraniye - İstanbul Mail: Sales.IA.Turkey@deltaw.com TEL: +90 216 499 9910 GCC: Delta Energy Systems AG (Dubai BR) P.O. Box 135658, Gate 7, 3rd Floor, Hamarain Centre Dubai, United Arab Emirates Mail: Sales.IA.MEA@deltaw.com TEL: +971(0)4 2690148 Egypt + North Africa: Delta Electronics 511 Cairo Bussiness Plaza, North 90 street, New Cairo, Cairo, Egypt TEL: +34(0)91 223 74 20 C/Iluri, 321-329 (Edificio Cinc) 22@Barcelona, 08019 Barcelona Mail: Sales.IA.MEA@deltaw.com
---	---	---	--